



62, Davison Drive, Weir Hill Off Preston Street, Shrewsbury, SY2 5WE
£1,100 Per Month



62, Davison Drive, Weir Hill Off Preston Street, Shrewsbury, SY2 5WE

£1,100 Per Month

VIRTUAL TOUR AVAILABLE: Modern three bedroom end of terrace house in a popular residential area to the east of Shrewsbury town centre, benefitting from excellent road links and access to the A5 & M54. Includes driveway parking for two cars.

Available: 01/03/25

Description

Comprising: Entrance lobby, cloakroom with WC, living room including understairs cupboard, modern kitchen including appliances, dining area with double doors to rear. Upstairs to landing including airing cupboard, master bedroom including built in wardrobe and ensuite shower room, further double bedroom, single bedroom, family bathroom including shower. Gas central heating, double glazing. Rear garden including patio. Driveway parking for two cars. EPC B



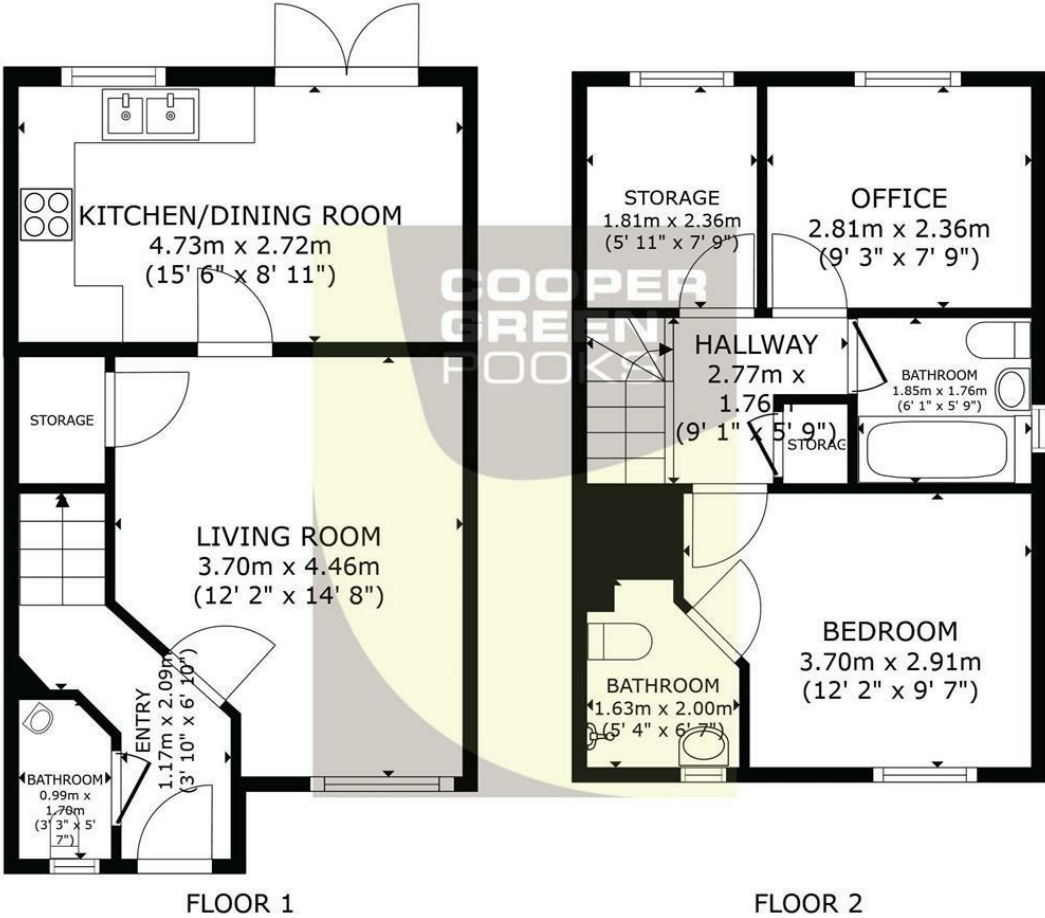
Unfurnished

Council Tax Band: C

Available: 1st March 2025

EPC: B

Floor Plans



GROSS INTERNAL AREA
FLOOR 1 36.6 m² (394 sq.ft.) FLOOR 2 34.2 m² (368 sq.ft.)
TOTAL : 70.8 m² (762 sq.ft.)
SIZES AND DIMENSIONS ARE APPROXIMATE, ACTUAL MAY VARY.



These particulars, whilst believed to be accurate are set out as a general outline only for guidance and do not constitute any part of an offer or contract. Intending purchasers should not rely on them as statements of representation of fact, but must satisfy themselves by inspection or otherwise as to their accuracy. No person in this firms employment has the authority to make or give any representation or warranty in respect of the property.